

**BARBE ELEMENTARY SCHOOL
SCHOOL IMPROVEMENT
FAMILY MEETING
2021-2022**



WELCOME & OVERVIEW



WELCOME, BARBE ELEMENTARY FAMILIES!

- **HERE AT BARBE ELEMENTARY OUR STUDENTS ARE JUST AS CAPABLE AS ANY STUDENTS ACROSS THE US.**

EVERY DAY, WE ARE COMMITTED TO ENSURING THAT OUR STUDENTS HAVE THE OPPORTUNITY TO GROW AND THRIVE SO THEY CAN REACH THEIR POTENTIAL.

TO DO THIS, WE NEED A PLAN IN PLACE TO ENSURE EVERY TEACHER IS PREPARED TO PROVIDE EVERY STUDENT WHAT THEY NEED TO BE SUCCESSFUL.

Creating a Plan for School Improvement

Therefore, as required by state and federal laws and regulations, we submitted a plan to the Louisiana Department of Education in the winter of 2021 to support our school's improvement.

We received approval of this plan from the Department in spring of 2021.

The key components of our plan that will lead to school improvement include:

- High quality curriculum and assessments in all grades.
- High quality professional development for all teachers on the selected curriculum.
- A teacher preparation partner to address our schools' greatest workforce needs.
- Building school-based expertise through leadership roles.
- A Professional Development Plan to ensure teachers are preparing for units and building content knowledge.
- Collaborating with our district's UIR-Discipline Leader to support improvement around student engagement.

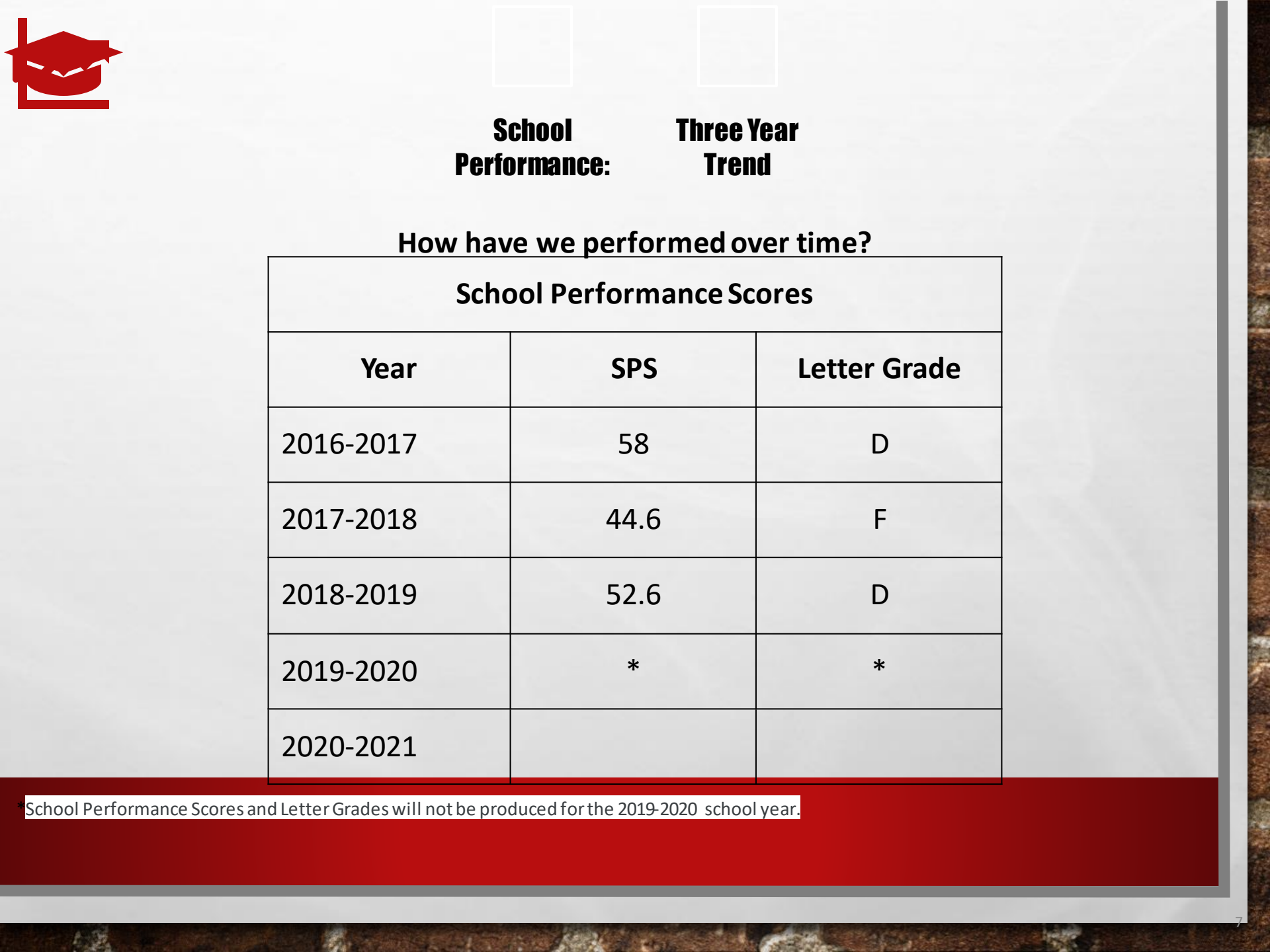
Commitment to Barbe Elementary Families

OUR GOAL IS TO KEEP YOU INFORMED, TODAY AND THROUGHOUT THE YEAR, ON THE IMPLEMENTATION OF OUR SCHOOL IMPROVEMENT PLAN.

TODAY, WE'LL PROVIDE INFORMATION ON:

- our school and student performance data that caused the LDOE to identify our school as being in need of improvement;
- an overview of our plan;
- timelines for implementation of our plan and attainment of performance goals; and
- implications of our plan for students, families, and educators.

SCHOOL PERFORMANCE DATA



**School
Performance:**

**Three Year
Trend**

How have we performed over time?

School Performance Scores		
Year	SPS	Letter Grade
2016-2017	58	D
2017-2018	44.6	F
2018-2019	52.6	D
2019-2020	*	*
2020-2021		

*School Performance Scores and Letter Grades will not be produced for the 2019-2020 school year.

School Performance: Three Year Trend

How have we performed over time?

Student Progress Scores		
Year	SPS	Letter Grade
2017-2018	79.5	C
2018-2019	87.5	B
2019-2020	*	*
2020-2021		

*School Performance Scores and Letter Grades will not be produced for the 2019-2020 school year.

School Performance:

Understanding LEAP 2025 Achievement Levels

LEAP 2025 is divided by five levels of achievement. Our goal is for every student to reach at least “Mastery” which signals readiness for the next grade level.

LEVEL 5

ADVANCED

Exceeded Expectations

LEVEL 4

MASTERY

Met Expectations

LEVEL 3

BASIC

Nearly Met Expectations

LEVEL 2

APPROACHING BASIC

Partially Met Expectations

LEVEL 1

UNSATISFACTORY

Expectations Not Yet Met

School Performance: LEAP 2025 Trends Over Time

How have we prepared students to master grade-level content?

Percent of Students Attaining Mastery and Above				
Subject	2017-2018	2018-2019	2019-2020	2020-2021
All Subjects	11%	15%	*	
ELA	14%	24%	*	
Math	14%	24%	*	
Social Studies	6 %	4 %*	*	
Science	N/A	8%	*	

Percent of Students Attaining Mastery and Above				
Student Group	2017- 2018	2018- 2019	2019- 2020	2020-21
Economically Disadvantaged	<5%	14%	*	
Students of Color	<5%	15%	*	
Students with Disabilities	<5%	<5%	*	
English Language Learners	n/a	n/a	*	

**SCHOOL PERFORMANCE:
LEAP 2025 TRENDS OVER TIME WITH SPECIFIC GROUPS OF STUDENTS**

OUR SCHOOL IMPROVEMENT PLAN



2021-22 SCHOOL IMPROVEMENT GOALS AND PRIORITIES


**GIVEN THE DATA WE'VE SHARED, BARBE ELEMENTARY SCHOOL IS FOCUSED
ON THE FOLLOWING PRIORITIES FOR THE 2021-2022 SCHOOL YEAR:**

- 1. INCREASE SCHOOL PERFORMANCE SCORE FROM 52.6 TO 62.6**
- 2. INCREASE STUDENT PERFORMANCE SCORE FROM 41% TO 51%**
- 3. INCREASE STUDENT GROWTH SCORE FROM 87.5 TO 90.5%**
- 4. INCREASE STUDENT ATTENDANCE FROM 74% TO 84%**



SCHOOL IMPROVEMENT PLAN IMPLEMENTATION TIMELINE

14

Timeframe	Activity
Spring-Summer 2021	Training in NIET, Training Content Leaders in ELA and Math, Hire one Master Teacher, Literacy Coach and Acceleration Training to address unfinished Learning
Fall 2021	 LDOE visits in Classroom Support and Common Planning, Schoolkits PD in Mathematics, Louisiana Acceleration Best Practices, Focus on Planning Tier I Curriculum addressing students who will struggle through Lesson plan annotation, Identify Rti /Acceleration groups, SPED implementation of Tier I curriculum, Use data to drive instruction, Face to Face tutoring
Winter 2021	Curriculum Checklist of critical standards covered, Identifying level of rigor, Teachers lead in cluster/planning, Virtual Tutoring
Spring 2022	Plan of action for standards assessed below 70%



NEXT STEPS



Working Together for School Improvement

We are committed to providing families with meaningful, two-way communication about Barbe Elementary School's plan and your child's academic progress throughout the year.

Here are ways we can partner to meet our plan's goals:

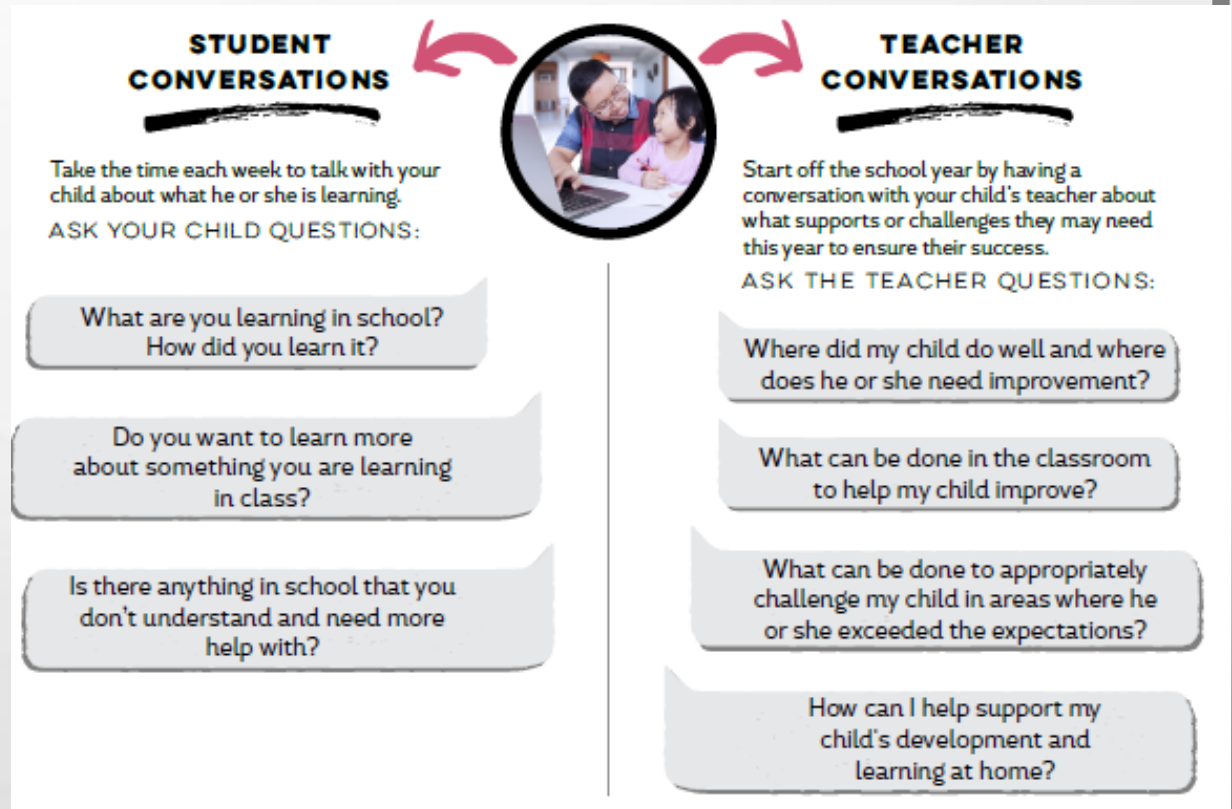
- **Communicate with us:** Contact your child's teacher or principal with questions about your child's progress, learning needs, or school events/programs through school website, flyers, email, phone call , Canvas, remind app.
- **Support learning at home:** Attend an upcoming parent workshop to learn more about supporting your child's learning at home.

How Can You Support Learning at Home for PK-K Students?

At home, you can play an important role in setting high expectations for learning and supporting your child.

Building this understanding of what your child knows and should be able to do begins with meaningful conversations with your child and your child's teacher.

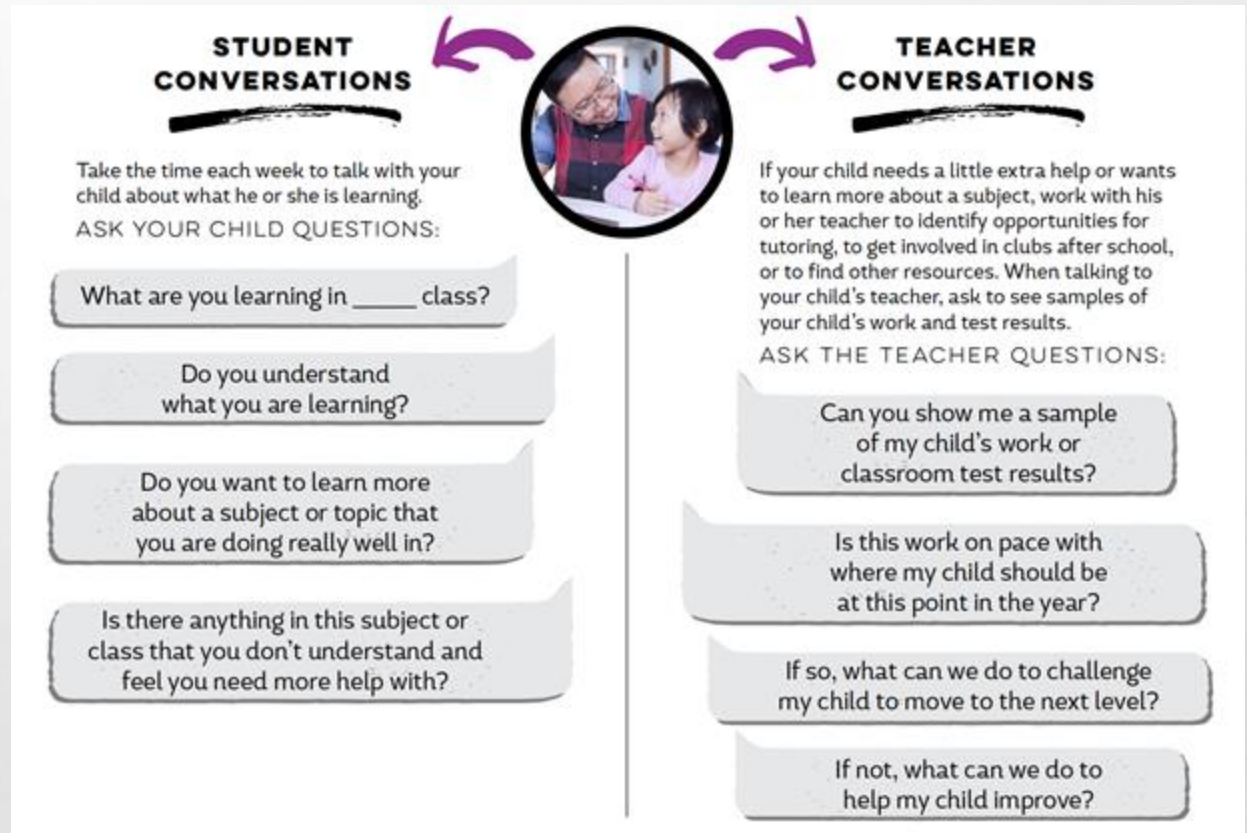
By taking these small steps, you will be helping your child become successful both in and outside of the classroom.



How Can You Support Learning at Home for Students in Grades 1-5?

Families play an important role in setting high expectations for learning by having meaningful conversations with their children and their teachers.

By supporting what your children do at school, aid in your children becoming successful both in and outside the classroom.



THANK YOU

Sharon Ruffin-Hardy, Principal

sharon.hardy@cpsb.org

Barbe Elementary School

400 Penn Street

Lake Charles, LA 70601

337-217-4600

School Website:

<https://www.cpsb.org/Domain/134>